

# MFH Tola, Saas-Fee

2013

---



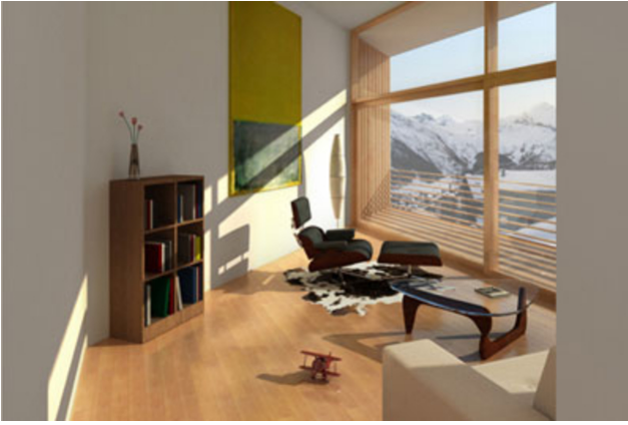
In the middle of the village, in a prime location, an apartment building with 7 exclusive condominiums was built. Overheight rooms open the view on a chain of majestic snow mountains.

## The project

The building is a hybrid construction of wood, steel and reinforced concrete. The floor slabs and load-bearing interior walls are mainly of solid construction. The building envelope consists mostly of timber frame elements. The balconies and the static wall panels (for load transfer from the canopy) are also realized in wood. The roof is supported by HEB 260 steel rafters. The rest of the roof structure is again made of wood.

## The construction

The appearance of the building volume is characterized by selected, locally anchored materials, such as natural stones as roofing and a wooden shingle facade.



Overheight living space against the south

### Construction Data

- 27 m<sup>3</sup> Glulam
- 2 m<sup>3</sup> Glued laminated timber larch
- 14.5 t steel S 235 / S 355
- 350 m<sup>2</sup> Natural stone roofing
- Roof elements
- Exterior walls in wood

### Services of Timbatec

- SIA Phase 31 Preliminary design
- SIA Phase 32 Construction project
- Structural analysis and design
- SIA Phase 41 Tendering and comparison of offers
- SIA Phase 51 Implementation project
- 3D and 2D construction planning
- Site supervision and site inspections



West view

### Timber constructor

Holzbau Noll AG  
3902 Brig-Glis

### Client / Architect

Jürg Bumann GmbH  
8004 Zurich

### Timberconstruction engineer

Timbatec Holzbauingenieure Schweiz AG, Bern  
3012 Bern