

# Nauenstrasse, Tann ZH

2020

---



The newly built apartment house in Tann is located directly next to the Nauenbach. The wooden house with 4 floors offers a total of 5 rental apartments in a quiet location.

## The project

The planning of the project was a small family plan of the Timbatec employee. The architect in charge and the civil engineer are siblings of one of the employees. The building is built as a wooden structure from the floor slab. The solid wooden ceilings rest on the interior load-bearing axes and exterior walls. The cantilevered balconies were all constructed without columns. All beams and columns, as well as the ceilings, are visible and were treated with a UV protection with a light white content. Timbatec was responsible for the entire timber structural design, the detailed design and the fire protection design including quality assurance.

## The construction

From the floor slab onwards, the building is a pure timber construction. The elevator shaft and staircase are also made of wood. The escape staircase is a steel construction. The timber construction was realized very efficiently. The three interior load-bearing axes with beams and slabs as single span beams are visible. The ceiling span 4.0-4.5m is optimal. The supporting axes with beams are supported every 3.5m.

## The challenge

The challenge was the cantilevered balconies with 90 degrees against the span direction of the slabs. These were executed with load-bearing balcony parapets anchored in the exterior walls.



Interior view



Attic

### Construction Data

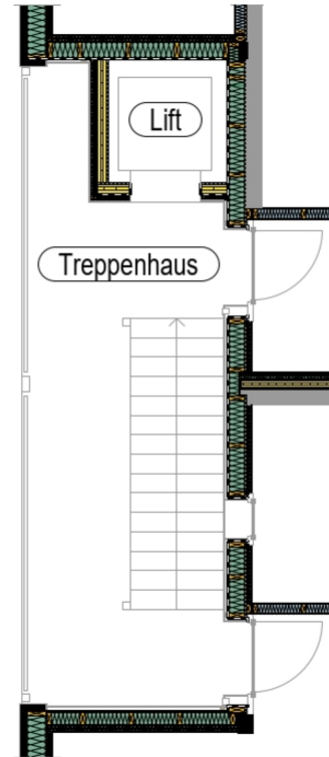
- Wood-based panels 25 m<sup>3</sup>
- Structural timber / BSH 150 m<sup>3</sup>

### Construction costs

- BKP 1-9: 5.5 million Swiss francs
- BKP 2: 2.3 million Swiss francs
- BKP 214: 0.5 million Swiss francs

### Services of Timbatec

- SIA Phase 31 Preliminary project
- SIA Phase 32 Construction project
- SIA Phase 41 Tendering and comparison of offers
- SIA Phase 51 Implementation project
- SIA Phase 52 Execution
- SIA Phase 53 Commissioning
- Statics and construction
- Technical planning for fire protection
- Fire protection quality assurance QSS2



Detail staircase

### Architect

Architekturbüro Rüegg, 8733 Eschenbach

### Client

Marlise and Hans-Jakob Wetli, 8632 Tann ZH

### Timber construction engineer

Timbatec Holzbauingenieure Schweiz AG, 8005 Zurich

### Timber construction

Artho Holz- und Elementbau AG, 8735 St. Gallenkappel

### Civil engineer

EBP Schweiz AG, 8008 Zurich

### Construction management

Architekturbüro Rüegg, 8733 Eschenbach

### Photography

Architekturbüro Rüegg, 8733 Eschenbach