

# MFH Lysbüchel Weinlagerstrasse, Basel

2024

---



On a 26,000 m<sup>2</sup> site, Immobilien Basel-Stadt is gradually transforming the former industrial area into a vibrant district of Basel through various construction measures as part of the Lysbüchel site development project.

## The project

The Lysbüchel site development in Basel is transforming a former industrial site into a vibrant residential and commercial district. A primary school with two kindergartens and daycare facilities, as well as the ELYS cultural and commercial center (nominated for the prixSIA 2024, among other awards), have been completed. In addition, cooperative and affordable apartments (1000+ housing program), new jobs, public green spaces, and a neighborhood square have been created. The LysP8 project – a new residential and commercial building – combines a point block on the Volta Nord neighborhood square, a long building along Lothringerstrasse, and a connecting access element. This marks the entrance, connects the floors, and allows for differentiated facades and efficient use of space.

## The construction method

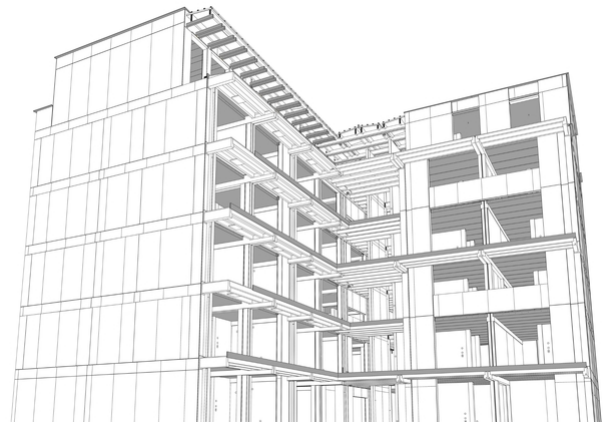
LysP8 is designed as a timber construction and meets high standards for resource-efficient building. Numerous used components are reused, including elements of the solid wood ceiling from the former Formula E race track in Zurich, fermacell® gypsum fiber boards for the walls, and corrugated sheets for the roof. Cork strips attached to the wooden floor joists improve footfall and room sound insulation while also forming a visible shadow gap on the ceiling.

## The challenge

In cooperation with the engineering firm PIRMIN JUNG Schweiz AG, a specially designed steel shear connection was developed and used for this specific project. The wall panel elements were joined and connected in a coherent manner.



Exterior view of the pergola



3D working model



Striking wooden structures in the interior design

### Services of Timbatec

- 3D and 2D shop floor planning

### Building owner

Stiftung Habitat  
4058 Basel

### Architect

Loeliger Strub Architektur  
8004 Zürich

### Client

Stamm Bau AG  
4144 Arlesheim

### Timber construction engineer

PIRMIN JUNG Schweiz AG  
6210 Sursee

### Timber construction

Stamm Bau AG  
4144 Arlesheim

### Photography

foto-werk gmbh, Fotografie  
4056 Basel