

# Reference projects

## Large volume buildings

---



### **Buchholz Residential Development, Zurich**

With a total of 127 residential units, the Buchholzstrasse residential complex blends harmoniously into the popular Witikon neighborhood thanks to its timber-frame facade and high-quality wood cladding., Zurich

---



### **Wiesental School, East Building, Baar**

The Wiesental School in Baar was adapted to today's requirements by means of a replacement building. The project, implemented using modern timber construction methods and featuring a mega timber framework, combines functionality and aesthetics., Baar

---



### **Replacement construction of old brickworks, Haufland Riedikon**

The replacement construction of a modern office and commercial building using timber construction methods is combined with the use of clay as a material. The implementation impresses with its sustainable construction and excellent CO2 balance., Haufland Riedikon

---



### **Baumschulareal development**

To date, this is probably the most extensive new construction project ever realized in Küttigen/AG. Over 150 apartments have been built in the Rombach district. Timbatec was responsible for the workshop plans for all the timber components.

---



### **New Construction of the Y80 Multifunctional Laboratory Building, Zurich**

The University of Zurich's (UZH) multifunctional Y80 laboratory building brings together three leading research institutes and provides a state-of-the-art infrastructure for medical research. Floors 1 through 3 were constructed using prefabricated timber elements., Zurich

---



### **New construction Hofackerstrasse, load-bearing hybrid, Zürich**

The existing buildings on Hofackerstrasse 1-5a from the 1930s were demolished and replaced by new buildings., Zürich

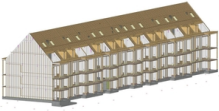
---



### **Limeco Hybrid Power Plant, Dietlikon**

Limeco's new power-to-gas plant makes a positive contribution to climate change. It will produce renewable gas from waste and wastewater and feed it into the grid from winter 2021-22. From the parking ceiling upwards, the plant building is a pure timber construction., Dietlikon

---



### **MFH Riburgstrasse, Basel**

The Riburg housing cooperative in Basel relies on wood for its new replacement buildings. Thanks to modular construction, ecological and cost-effective apartments can be created. The basis for this is early and integral planning., Basel

---



### **«Krokodil» house in Lokstadt, Winterthur**

Where locomotives and machines were once built, a new district is now being created. Urban living and working space for over 1,500 people is being created right next to Winterthur railroad station. Timbatec was responsible for the timber engineering services for the first building of the new Lokstadt., Winterthur

---



### **Production hall von Siebenthal Holzbau AG, Mauren TG**

The company von Siebenthal Holzbau AG from Mauren TG has extended its premises with the construction of the new production hall., Mauren TG

---



### **New construction RFSM Building G, Fribourg**

To accommodate all the vehicles of staff and visitors, the mental health network expanded its site in Villars-sur-Glâne with a parking garage. On the attic floor, 1150m<sup>2</sup> of practice rooms and meeting rooms were created in wood construction., Fribourg

---



### **Raiffeisen Arena, Porrentruy**

We don't know whether the regional wood used in the new Raiffeisen Arena in Porrentruy was the decisive factor in HC Ajoie's promotion to the NLA. What is certain, however, is that the ice rink is a showcase project., Porrentruy

---



### **«sue+til» residential development, Winterthur**

«sue+til»: Currently the largest residential development made of wood in Switzerland, it comprises 307 apartments, a mixed-use first floor and 200 parking spaces. The 6-storey building is a showcase project for timber construction in Switzerland., Winterthur

---



### **New construction RFSM Building F, Fribourg**

The new four-story building for the RFSM is the first hospital in Switzerland to be constructed entirely of wood. Timbatec provided all timber engineering services for this Minergie-P building, contributing to the building's safety., Fribourg

---



### **Estoppey industrial hall, Châtel-St-Denis**

The municipality and Estoppey-Reber AG had the industrial hall in Châtel-St-Denis in the canton of Fribourg renovated. The roof was insulated and reinforced so that it can withstand the heavy snow loads in the future., Châtel-St-Denis

---



### **New construction Simmental Arena, Zweisimmen**

The Simmental Arena, the new multifunctional hall in Zweisimmen, is largely made of Swiss wood. What's more, it does not require any interior supports at all. The roof is supported by ten 38-meter-long arched trusses., Zweisimmen

---



### **Addition of stories Hospital region Oberaargau SRO, Langenthal**

The intensive care unit of the Oberaargau Region Hospital in Langenthal has reached the limits of its capacity. Thanks to a wooden extension, the hospital now meets the increased space requirements., Langenthal

---



### **Wooden facade apartment houses Buchegg, Zürich**

In Zurich Wipkingen, the Waidberg building cooperative replaced an existing housing estate from the 1930s. Timbatec was responsible for all timber engineering services for the facades of the three apartment buildings with 110 apartments., Zürich

---



### **Renovation/ new construction Cormanon school, Villars-sur-Glâne**

In Villars-sûr-Glâne, two school buildings were renovated and the gymnasium and the connecting wooden wing were newly built - and all this during ongoing school operations. For everyone involved, this meant planning the work very precisely., Villars-sur-Glâne

---



### **Extension workshop, Gurmels**

The municipality of Gurmels in the Lake District of Fribourg recently opened a new workshop hall. The timber structure measures 28 by 21 meters and can be opened almost completely on one side - a challenge for Timbatec's timber engineers in terms of building bracing., Gurmels

---



### **Freeway depot, Loveresse BE**

The highest precision was required for the workshop on the A16 freeway in Loveresse in the Bernese Jura. The timber construction elements had to fit exactly because of the enormous dimensions of the 150-meter-long hall., Loveresse BE

---



### **Residential and commercial building MIN MAX, Opfikon**

Wood dominates the MIN MAX residential building in Glattpark. The two upper floors are made entirely of wood, while the lower floors have been designed as a hybrid construction., Opfikon

---



### **New training center for the sport of polo, Seuzach**

The Polo Park Zurich has relied entirely on wood as a building material for its new center. Both the operations building and the various stable buildings with the horse stalls have been realized as timber frame buildings., Seuzach

---



### **New building: timber merchant OLWO Otto Lädach, Worb**

OLWO, a timber processor and trader, needed a new office and exhibition building. Thus, a dominant four-story wooden building has been created in the middle of Worb., Worb

---



### **Multipurpose hall, Lenk**

As a replacement for an old gymnasium, a modern multi-purpose hall was built in Lenk BE. The roof of the hall and its supporting structure are made of wood. The structure not only has to withstand high snow loads, but also the forces that arise when the sports equipment attached to the structure is used., Lenk

---



### **Settlement Oberfeld, Ostermundigen bei Bern**

On the edge of the Ostermundigenberg, the car-free wooden housing estate "Oberfeld Ostermundigen" was built with around 110 apartments. Close to nature and yet quickly in the center, the settlement combines the advantages of the urban lifestyle with rural idyll., Ostermundigen bei Bern

---



### **Johnsonhaus, Köniz**

In the heart of the municipality of Köniz, in a sunny location close to the center, a residential and commercial building has been realized on Neuhausplatz. Not only the facade but also the supporting structure is made of wood., Köniz

---



### **Hotel The Chedi, Andermatt**

"Andermatt Swiss Alps" is a year-round vacation destination being built in the middle of the Swiss Alps. The project includes six hotels in the 4- and 5-star range, about 500 apartments in 42 buildings, 25 exclusive chalets., Andermatt

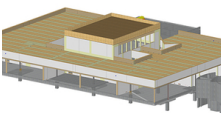
---



### **MFH Schönberg East, Bern**

The four-story wooden building stands on the eastern outskirts of Bern. Thanks to recesses and inwardly offset balconies, small areas are created that make the object with dimensions of 37 x 16 x 12 m appear smaller and break up the silhouette., Bern

---



### **Increase Bell AG, Basel**

At Bell AG on Elsässerstrasse in Basel, new offices and an auditorium were built on the 5th floor, above the existing production facility., Basel

---



### **Mobility Competence Center Car, Wankdorf Bern**

It is unusual for ten associations in one industry to join forces to create a joint training center. This is exactly what the automotive associations did in Bern Wankdorf on Wölflistrasse. They built a new building as a training and further education center for the automotive industry in Switzerland. Timbatec was commissioned for the demanding planning of these halls., Wankdorf Bern

---



### **Apartment house SolVita7, Biel/Bienne**

In a preferred location, the building offers space for seven exclusive apartments. The modern timber construction meets the MINERGIE-ECO standard. The high requirements for eco-balance and energy consumption are thus fulfilled., Biel/Bienne

---



### **New construction of Mosimann and Stromer Campus halls, Oberwangen**

The two symmetrically arranged halls are located on Freiburgstrasse in Oberwangen. The cubes with the dimensions 50x26x12 m shape the image of the landscape next to the highway., Oberwangen

---



### **Warehouse Thommen Furler, Rüti bei Büren**

A new storage hall was designed for the acids and alkalis to be stored by Thommen Furler AG, which can cope with the high demands of aggressive chemicals., Rüti bei Büren

---



### **New construction housing estate Watt, Regensdorf**

The development in the Minergie-P Eco standard is designed as a zero-energy housing estate and consists of 2 multi-family houses and 7 terraced single-family houses. The entire settlement is built from the first floor in timber construction., Regensdorf

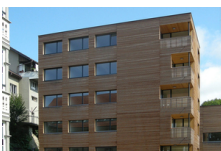
---



### **New construction warehouse Jungheinrich AG, Hirschthal**

New storage resources were needed at the Jungheinrich company site in Hirschthal. To achieve this, a warehouse with a large forecourt roof in wood was planned., Hirschthal

---



### **New construction/renovation of the Mühleareal complex, Herbligen BE**

A five-story apartment building and 2 x 3 row single-family homes are clustered around the existing mill building., Herbligen BE

---



### **Multipurpose hall Preisegg, Hasle bei Burgdorf**

The multipurpose hall is located directly next to the Preisegg school complex, in a rural setting. Due to the good cooperation on the project "Eishalle Brännli", the engineers C+S from Hasle and Timbatec from Thun were again commissioned., Hasle bei Burgdorf

---



### **New construction sports hall Auenfeld, Frauenfeld**

According to the initial plans, the roof structure of the triple gymnasium was to be realized as a shed roof with six large sheds in steel construction. After other structural variants, also in wood, had been examined in detail, the client decided in favor of a flat roof in wood construction., Frauenfeld

---



### **New construction of a roof for the Brünli ice rink, Hasle b. Burgdorf**

A roof for the previously open ice rink was to be built over the existing civil defense facility. The building lines allowed hardly any leeway in the design of the roof shape. Limitations had to be observed not only in the ground plan, but also in the section., Hasle b. Burgdorf



### **New construction sports hall Ebnet, Gstaad-Saanen**

The executed project, a 3-fold gymnasium with combined steel-wood trusses, emerged from an architectural competition in 2002. With the orientation of the shed roof to the south, it is possible to directly use solar energy passively., Gstaad-Saanen



### **New construction of boarding school Försterschule, Lyss**

An exceptional tender, a large construction volume and a short construction period characterize this project., Lyss