

Temporary Restaurant “time out” at the Cantonal Hospital, Aarau

2020



The new staff restaurant “time out” at the Aarau Cantonal Hospital was completed in just eight months. 3D planning and effective project management made this rapid construction timeline possible.

The Project

The new restaurant had to be built quickly despite limited space. Cost, ease of dismantling, and a welcoming atmosphere for hospital staff were key criteria. With these requirements in mind, the client evaluated various options: a structure made of shipping containers, a tent, or a timber building were all under consideration. A modular timber structure with a service life of 5 years proved to be the most economical solution. Planning with the cadwork Team Module The planning team created a digital twin of the Time Out restaurant—even before the first piece of wood was cut. This allowed errors to be identified during the planning phase and corrected without incurring high costs.

The Construction Process

In this process, multiple people work on linked 3D plans. As soon as a specialist updates their model, the other participants receive a notification. They, in turn, update their models to reflect the latest changes. The “time out” project serves as the proof of concept in Europe for the newly developed team module—the team functionality will be integrated into the BIM Manager in one of the upcoming cadwork versions.

The Challenge

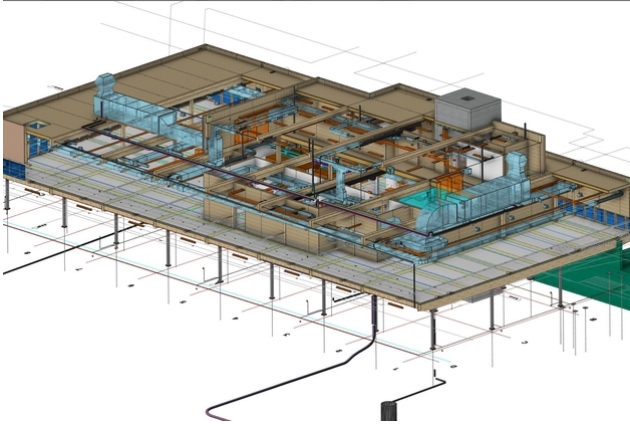
In addition to the shop detailing of all timber components, Timbatec was also responsible for the engineering work and fire protection. With well-thought-out details, Timbatec ensures that the staff restaurant impresses with its functionality.



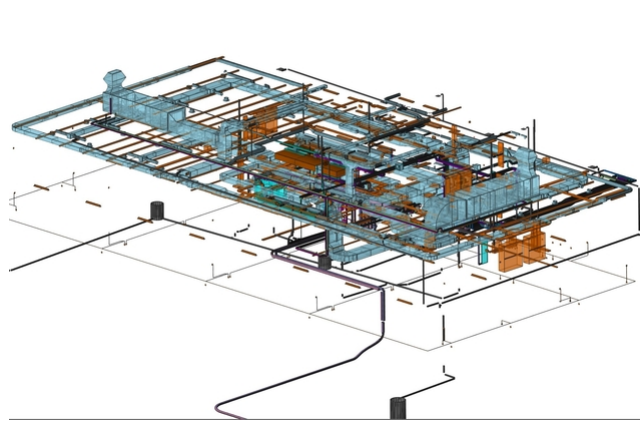
Innenansicht



Innenraum vor Einrichtung



Holzbauplanung und HLKS sind aufeinander abgestimmt



HLKS-Planung im 3-D-Modell

Construction Data

- Box girder sections 1,400 m²
- Glulam 150 m³
- OSB panels 4,500 m²

Construction costs

- BKP 1-9: 6 million Swiss francs
- BKP 214: 1
- 1 million Swiss francs

Services of Timbatec

- SIA Phase 31 Preliminary Design
- SIA Phase 32 Construction Project
- SIA Phase 41 Tendering and Bid Comparison
- SIA Phase 51 Construction design
- SIA Phase 52 Construction
- SIA Phase 53 Commissioning
- Structural Analysis and Design
- Fire protection design
- Fire Protection Quality Assurance QSS2
- Cost estimation
- 3D and 2D construction drawings
- Technical construction management and site inspections

Architect

Erne AG Holzbau, 5080 Laufenburg

Client

Kantonsspital Aarau AG, 5001 Aarau

Timber construction engineer: Timbatec Holzbauingenieure Schweiz AG, 8005 Zurich

Timber construction

Erne AG Holzbau, 5080 Laufenburg

Civil Engineer

STK Civil Engineers AG, 8802 Kilchberg

Building Physics

BAKUS Bauphysik & Akustik GmbH, 8045 Zurich